



North America Headquarters

For Low Pressure, Portable Cleaning Systems

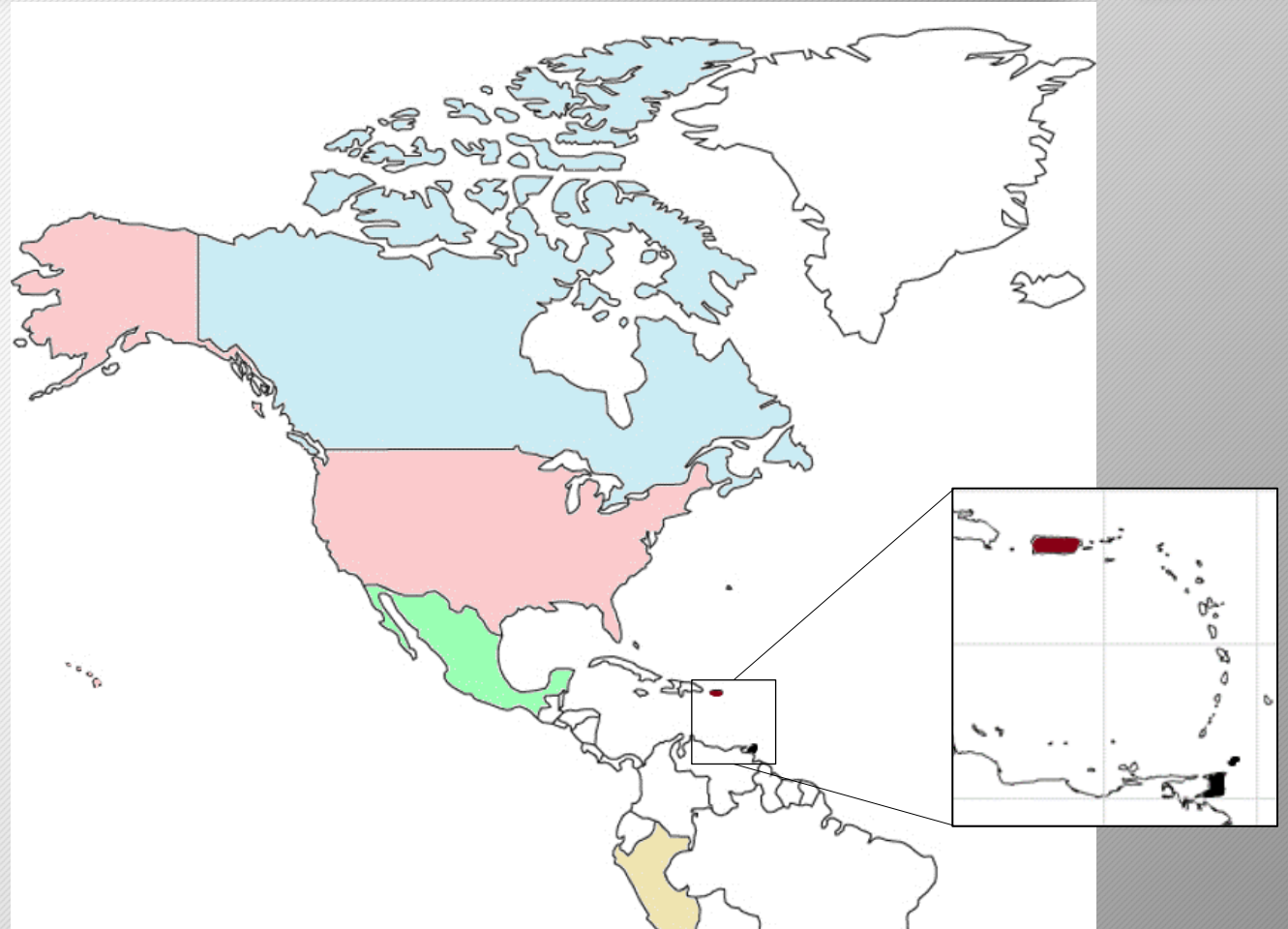
www.IBIXUSA.com



Introduction

Market coverage area in North America and other territories

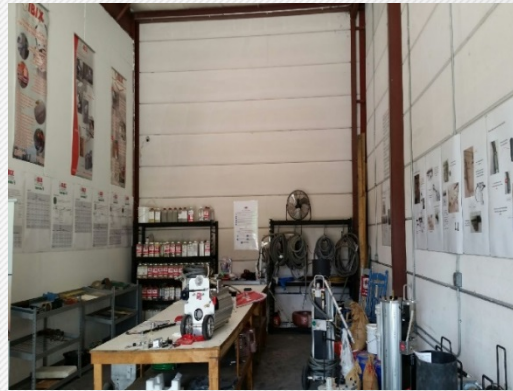
- USA
- Canada
- Mexico
- Puerto Rico
- Caribbean
 - BVI (British Virgin Island)
 - Trinidad and Tobago
 - Bahamas
 - Hawaii
 - Curacao
- South America



Introduction



Our commitment: we supply, serve and provide in depth training to our specialty Distributors Nationwide



Main strengths our IBIX North America Team:

- Know-how
- 100% Commitment to the customer
- Training and demos
- Stock of equipment and materials (abrasives)
- Technical support and after-sales service

IBIX Markets

- **REMEDICATION** – Fire soot and water damage restoration
- **Building Maintenance** – Hotels, Resorts, Condos, Schools,
- **Urban Maintenance** – Public facilities, Parks, City cleaning, Bus stops, train stations
- **Historic Preservation** – Buildings, Statues, Landmarks
- **Wood Restoration** (Furniture, Log homes, Antiques, Floors, Railings/doors)
- **Marine Repair** – (personal water craft as well Large ships and vessel on board repairs)
- **Automobile and Bike Restoration** – (old and new, as well race engines)
- **Aeronautics Restoration** – (old and new)
- **Train car Restoration** – (oil tankers and passengers maintenance)
- **Plant Maintenance** – including FOOD/Slaughter houses, and Pharma, Chemical plants
- **Off-Shore, Marine platforms**
- **OIL/GAS** – pipe lines repairs

IBIX Pro System Benefits: selling points vs our competition

- ONLY Aluminum system in the world, light weight and NON-corrosive material.
- Most convenient Portable system in the world, (Man-lifts, scaffolding, truck, van, capable)
- All systems are pneumatic driven. Compressed Air requirements range from **15 cfm – 185 cfm**.
- 5 sizes – capacity (small, medium, large) represents run time and performance
- Average Usage: Small Unit: Pro 9 = 1/4lb per sq ft / Medium: Pro 25 = 1/2lb per sq ft / Large Unit: Pro 60 = 1lb per sq ft
- Smallest surface prep abrasive system (Back Pack) in the world.
- Ea. System comes with various nozzle sizes ranging from 1.5 mm to 15 mm.
- Pro units: WET and DRY function
- Hose extensions available per system
- All spare parts and Maintenance KITS (50 or 100 hrs) are available
- **EASY to maintain**, clean and use !!!!
- **PERFECT small portable RENTAL system for contractor to try and purchase.**
- Pro units: variable air pressure (only system that can run at 5 PSI) low pressure micro abrasion
- NON-Destructive pressure, **no damage to surface!!**
- All systems have interchangeable guns utilizing a quick disconnect system
- Helical optional gun, rotating abrasive for soft cleaning
- Price point – some systems are more than 15.000 \$ plus investment for smaller contractors is a lot.



	IBIX Pro 3	IBIX Pro 9	IBIX Pro 25	IBIX Pro 40	IBIX HiPro 60
Capacity:	0.8 Gal (3 liters) 10-12lbs.	2.4 Gal (9 liters) 30-40 lbs.	6.6 Gal (25 liters) 55-70 lbs.	10.5 Gal (40 liters) 90-110 lbs.	16 Gal (60 liters) 150 lbs.
Nozzle Sizes:	0.12-0.2 inches (3-5mm)	0.12-0.2 inches (3-5mm)	0.2-0.28 inches (5.5-7mm)	0.4-0.48 inches (10-12mm)	0.5-0.59 inches (12-15mm)
Abrasive Range:	30-250 (0.025-2.5mm)	30-250 (0.025-2.5mm)	20-250 (0.025-2.5mm)	20-250 (0.025-2.5mm)	20-200 (0.025-2.5mm)
Size Micron:	38 µm to 1.2mm	38 µm to 1.2mm	38 µm to 1.8mm	38 µm up to 1.8 mm	38 µm up to 1.8 mm
Airflow Rates:	1.5-100 psi (0.2-6 bars)	3-120 psi (0.2-7 bars)	3-120 psi (0.2-7 bars)	3-123 psi (0.2-8 bars)	5-123 psi (0.2-8 bars)
Minimum Air:	7 CFM	17-19 CFM	57 CFM	185 CFM	1 Hose: 185 CFM 2 Hoses: 283 CFM
Hose Length:	8 feet (2.5 meters)	20 feet (6 meters)	30 feet (10 meters)	30 feet (10 meters)	30 feet (10 meters)
Hose Diameter:	Outside: ¾" Inside: ½"	Outside: ¾" Inside: ½"	Outside: 1" Inside: ¾"	Outside: 1½" Inside: 1"	Outside: 1½" Inside: 1"
Usage Rate:	0.25-1 lb./ft. ²	¾ - 1.5 lbs./ft. ² /min	1-1.5 lbs./ft. ² /min	2 lbs./ft. ²	3 lbs./ft. ²
Performance:	1ft ² /min	35-50 ft. ² /hr.	55-75 ft. ² /hr.	75-150 ft ² /hr	150-250 ft ² /hr
Run Time:	15-20 min	35-50 min	45-55 min	50-70 min	60-70 min
Gross Weight:	29 lbs.	45 lbs.	99 lbs.	130 lbs.	185 lbs.
Box Size:	16"x 14"x 21"	17"x 15"x 40"	20" x 17" x 48"	25" x 21" x 48"	36" x 30" x 56"

Available Compressors:

SMALL RANGE
17-20 CFM
Gas or Electrical
Mi-T-M C-M2-17



MEDIUM RANGE
70 CFM
Gas
Rotair VRK 220



MEDIUM RANGE
115 CFM
Diesel
Mi-T-M C-PK37-115



Materials: IBIX Blended abrasives specifically engineered for Restoration

- Pro systems run various Abrasives including fines and super fines for delicate cleaning or Restoration.
- Garnet, Glass, Plastic Beads, Calcium, Soda, Walnut shells, Cob shells.....anything can be put in the tank
- All Media that IBIX sells is Environmentally friendly, NO harm to the environment, people or animals which I believe is a BIG DEAL.
- Various surfaces can be cleaned and prep. With all our IBIX systems with various media to obtain various Surface Profiles specified in the JOB usually.



GMA Garnet

- Offering Restoration Grade package including blended grade:
- Fine restoration
- Medium restoration
- Course restoration
- 40 lb. bags with IBIX private labeling



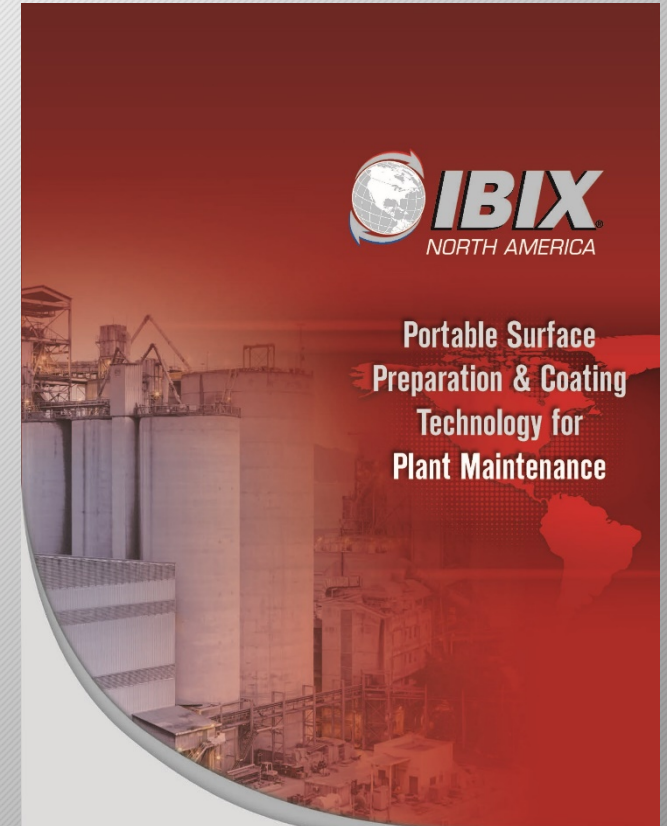
Industrial: Plant Maintenance & Repair

Applications

- *Oil, Energy, Power, Waste & Water Plants*
- *Cleaning & removal of*
 - *Chemicals*
 - *Paints*
 - *Debris*
 - *Corrosion*
- *Effective on corroded concrete factory flooring*
- *Removal of rust in one pass to “white metal”*
- *Multiple surface applications such as*
 - *Concrete, masonry, stone*
 - *Steel, aluminum & composite materials*
 - *Pipes, pumps, valves & tanks*

Benefits

- *Portable “one-man” operation*
- *Work in tight/high spaces*
- *Low air volume requirements*
- *Minimal dusting to improve health & safety for operator and environment*



Paint Removal



Concrete Repair and Rebar Cleaning



UNIT INCLUDE:

Multi Valve Adjustable Media Flow Rate
Wet Surface Treatment Nozzle w/Standard Water Connection
Funnel w/Stainless Steel Screen for Reusing Abrasive Media

IRIX 3 H₂O

Lightweight Aluminum Construction for
Transportation Ease
Environmentally Friendly – Low Dust Emission
Single Unit Dual Function – Wet and/or Dry

SPECIFICATIONS:
ASME Compliant # 41,780

Surface

Technologies

Rust Removal



Marine: Boats & Ships

Applications

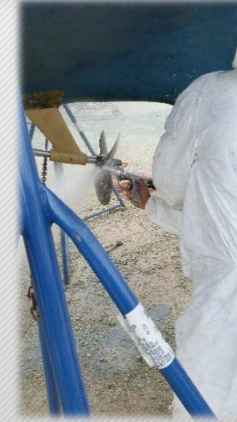
- **Blast with non-toxic soda to decontaminate and clean;**
 - Grease, oil residue, paint, carbon deposits, glue

Off Shore Maintenance = No Down Time

- **Removal of barnacles and algae**
 - Hulls, Flaps, Lead Keels, Rudders, Propellers
- **Does not erode the gel-coat**
- **Layer by layer removal in “sand-paper” mode**
- **Removal of contaminants and tough marine coatings from**
 - Platforms, Oil Rigs, Ships, Carriers, Tankers
- **Removal of grease, oil, carbon deposits from**
 - Bilges, ballast tanks, cofferdams, lube oil tanks
- **Cleaning and decontamination of water tanks**
- **Polishing aluminum and stainless steel parts**
- **Spot blast surfaces down to white metal for 100%**



Top Quality Surface Preparation Technology for Marine Vessels



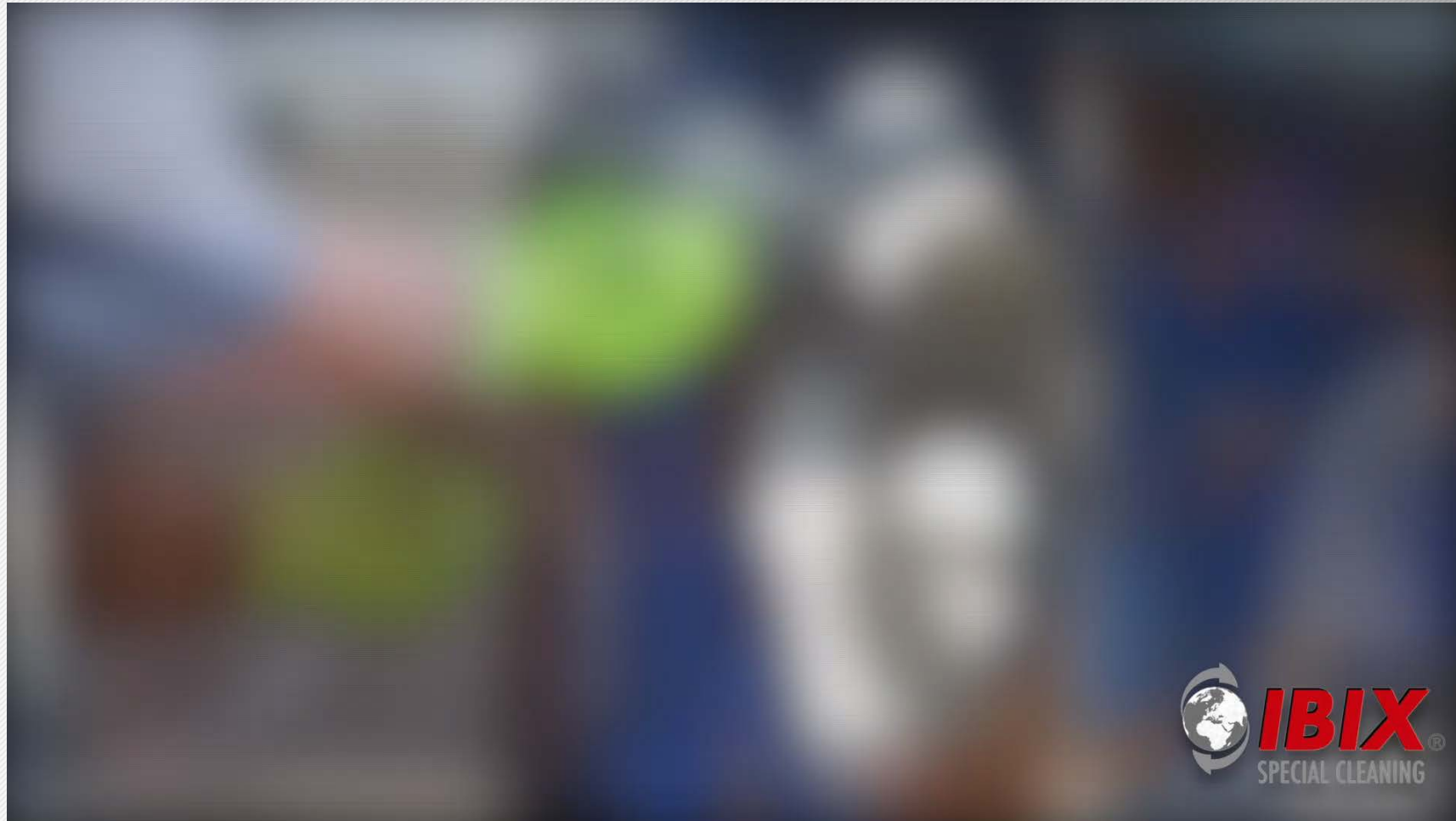
Easy In – Easy Out
Marina Access for
On-site
Maintenance &
Repair



Marine



Marine



Building & Structural Remediation

New Buildings

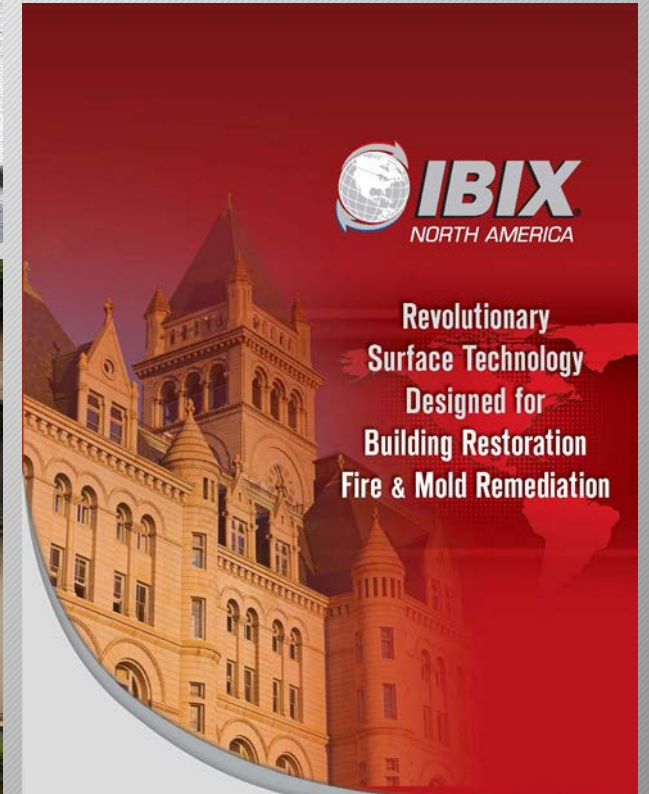
- *Cleaning the equipment to remove remaining material*
- *Cleaning drips of cement, mortars, plaster and machine waste*

Existing Buildings

- *Pre-renovation cleaning & removal of different types of layers*
 - *Graffiti*
 - *Paint Grime*
 - *Gum*
 - *Weld Cleaning*
- *Remediation of*
 - *Mold*
 - *Lime scale*
 - *Smoke*
 - *Soot Stains*
 - *Concrete Vapor Barrier*

Benefits

- *Economical, light weight & portable*
- *Ensure no damage to building structures*
- *Precise and consistent air & media to ensure even surface profile*
- *Minimal dusting to improve health & safety for operator*



Stone



Marble Cleaning IBIX Pro-25



Video courtesy of: Adam K. - Aramsco

Graffiti Removal



Woodworking

Applications

- *Restoration of delicate & precious wooden surfaces*
- *Intricate detailing work*
- *Remove paint from wood without use of solvents*

Benefits

- *Chemical free stripping = less toxic*
- *Faster than standard sandblasters*
- *Precise and consistent air & media to ensure even surface profile*



Wood IBIX-25 and 200 Mesh Garnet





Thank you!



2075 Lake Ave SE – Largo, FL 33771

(727) 322-4611

info@ibixusa.com

www.IBIXUSA.COM

